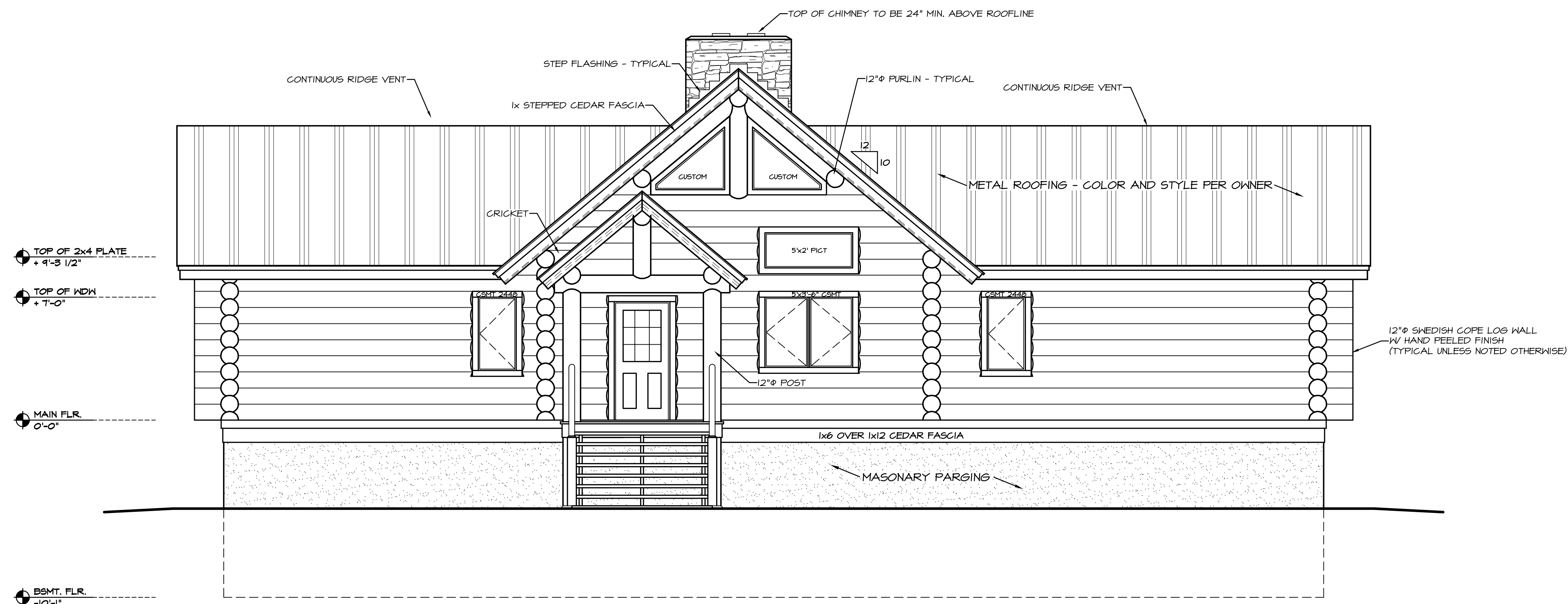


MAIN FLOOR PLAN
SCALE: 1/4" = 1'-0"

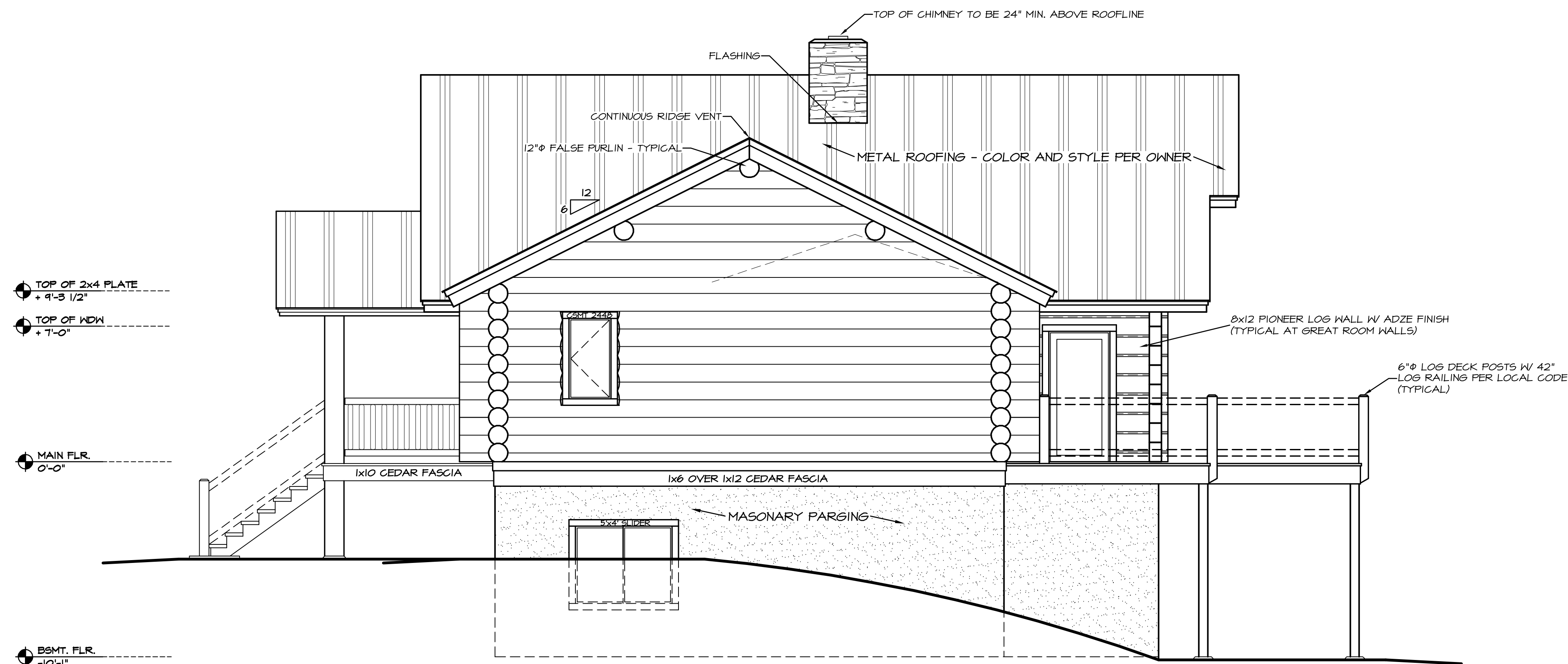
CONTRACTOR NOTE:
 ALL WINDOW OPENINGS, LOG TRUSSES,
 LOG RAFTERS, POSTS AND GABLE
 ENDS REQUIRE FIELD TRIMMING.

DRAWN BY:	REV.	SHEET
BDL		4
	REV.	OF
		16



FRONT ELEVATION

SCALE: 1/4" = 1'-0"



RIGHT SIDE ELEVATION

SCALE: 1/4" = 1'-0"

CONTRACTOR NOTE:
THE SPECIFICATIONS, WITHIN THIS PLAN SET ARE
ACCURATE AS OF THE MOST RECENT DATE IN THE
TITLE BLOCK. HOWEVER, IT IS THE CONTRACTORS
RESPONSIBILITY TO CONFIRM AND VERIFY ALL
MEASUREMENTS & SPECIFICATIONS.